

# MiroView Installation Guide



# MiroView 4.0 Installation Guide

## Installation Instructions

1. Before Installation
2. MiroView Installation
3. Additional Comments

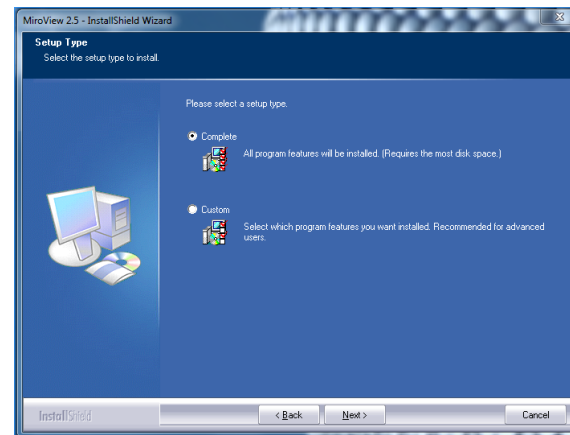
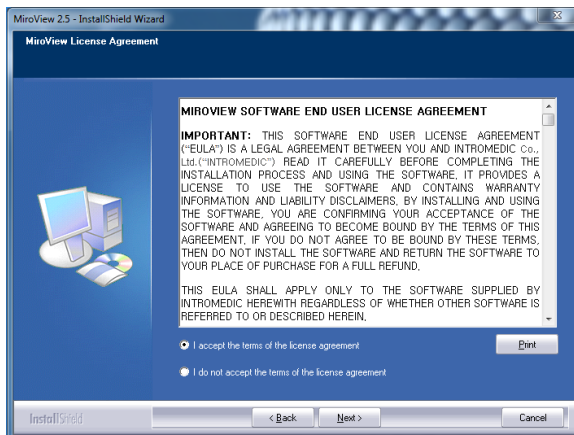


# Before Installation

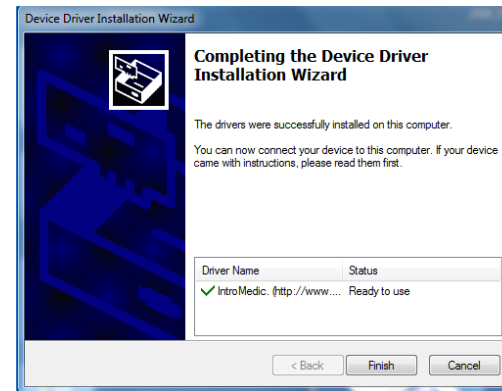
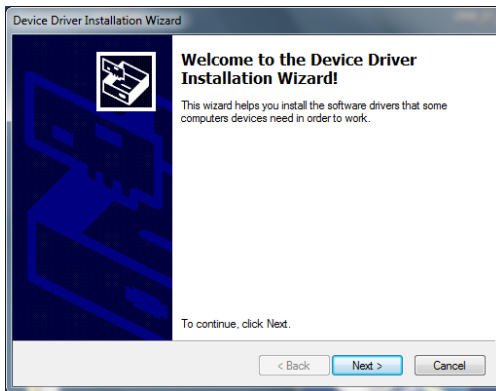
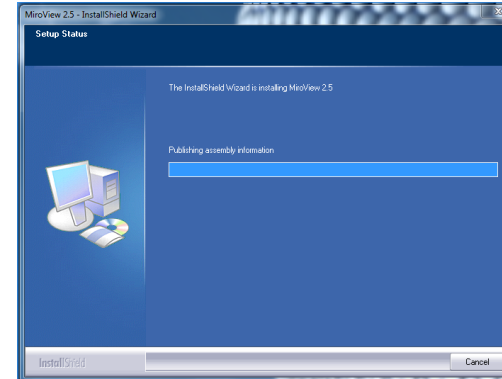
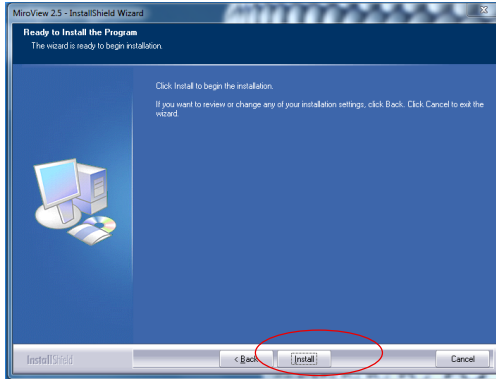
1. Log in as Administrator of the computer
2. Download the latest MiroView version
3. Install(run) the software **as administrator**(mouse right click -> run as administrator)

# MiroView Installation

1. Accept terms of license agreement and click Next
2. Choose Setup type
3. Complete: complete installation of MiroView software in one system
4. Custom : Optional installation of MiroView Server, MiroView Operator, and MiroView Client on separate computers



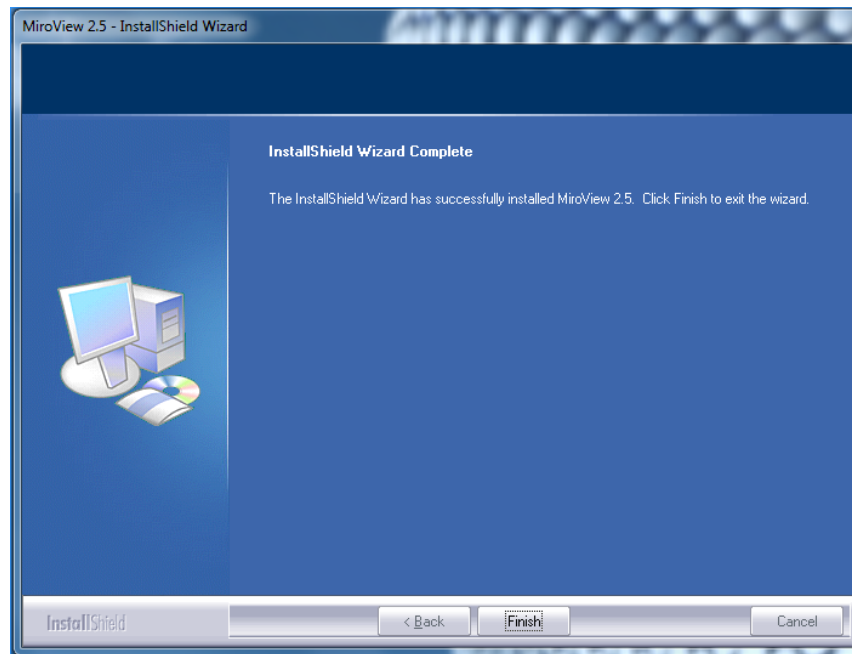
# MiroView Installation



- Click Next to install Driver for Receiver
- Click Finish to complete installation

# MiroView Installation

- Click Finish to complete the installation of MiroView



# MiroView Installation / MiroView Server - Setup

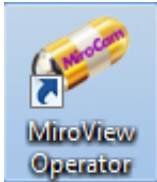


- Double click MiroView Server icon on the desktop

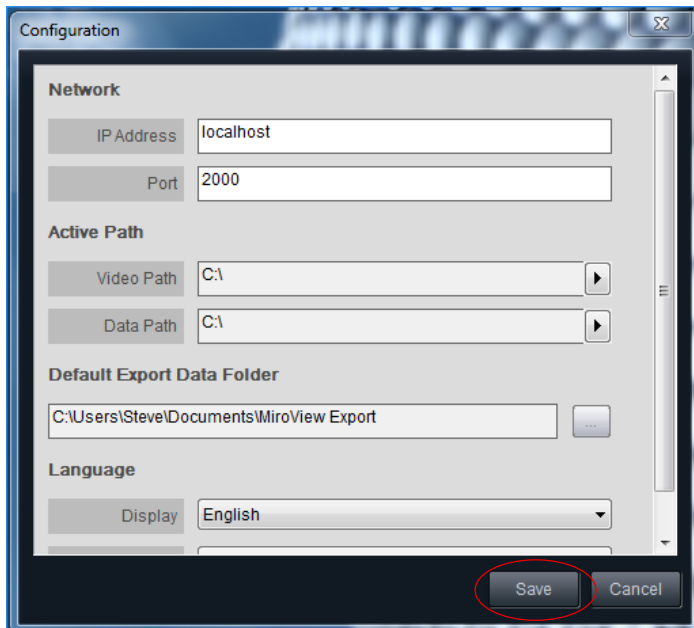
A screenshot of the MiroView Server Configuration window. The window has a title bar 'Configuration' and a close button. It contains several sections: 'Network' with 'IP Address' set to 'localhost' and 'Port' set to '2000'; 'Administrator Password' with 'Password' and 'Confirm' fields, both containing a single dot and circled in red; 'Active Path' with 'Video Path' and 'Data Path' both set to 'C:\' and circled in red; 'Language' with 'Display' set to 'English'; and 'Hospital Information' with 'Country' set to 'UNITED STATES'. At the bottom are 'Save' and 'Cancel' buttons.

- Setup the password(usually “1”)
- Setup the data store disk on Active Path(storage driver)
- Press Save
- Server will restart

# MiroView Installation / MiroView Operator - Setup



- Double click MiroView Operator icon on the desktop



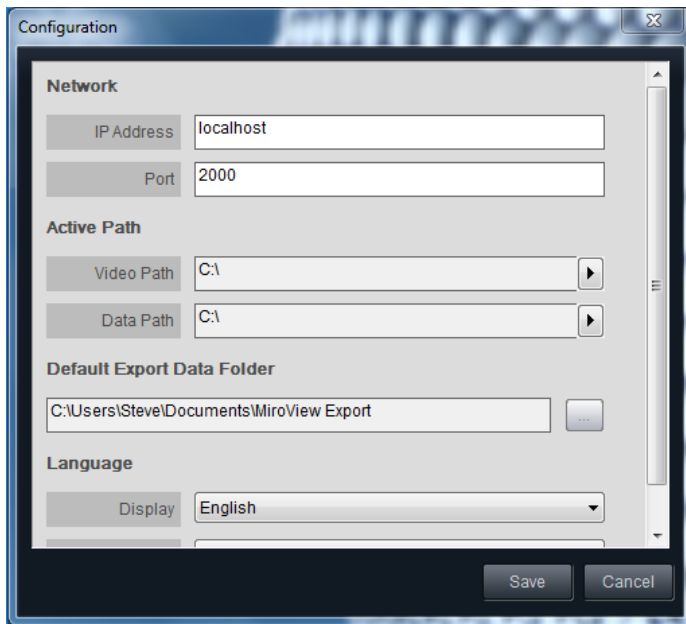
- Check on the Video Path & Data Path are set exactly as MiroView Server
- Click Save
- MiroView Operator will restart



# MiroView Installation / MiroView Client - Setup



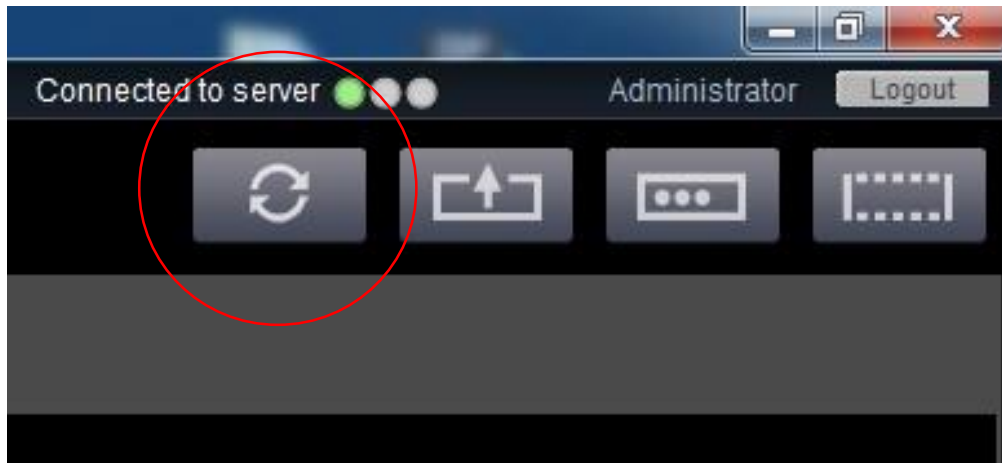
- Double click MiroView Server icon on the desktop



- Check on the Video Path & Data Path are set exactly as MiroView Server
- Click Save
- MiroView Client will restart

# Receiver Firmware update

1. Connect the Receiver with the PC
2. Open the MiroView Operator
3. If there is a new firmware version update you will see the firmware update icon at the left of upload button(see the picture under)
4. Press the firmware button and reboot the receiver after finish



# Additional Comments

- It is recommended to make regular backups and keep the patient files in at least two separate disk units. For example the PC where MiroView is installed and an external hard disk, driver, etc.
- It is recommended to regularly update MiroView to the latest available version.
- MiroView is compatible with both MR1100 and MR2000, but it is designed especially for MR2000. However, there is not any problem if the customer uses the MR1100 receiver.

# Thank You

